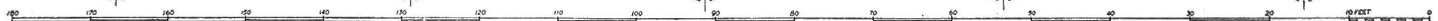
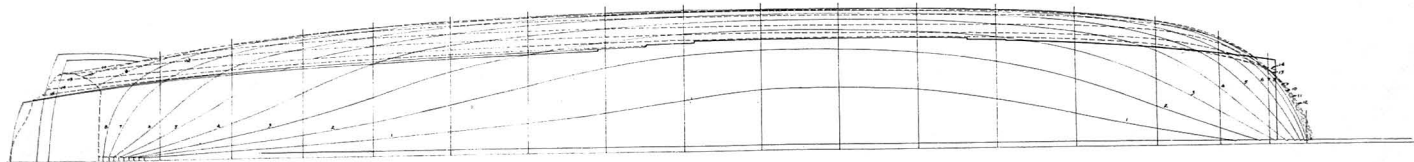


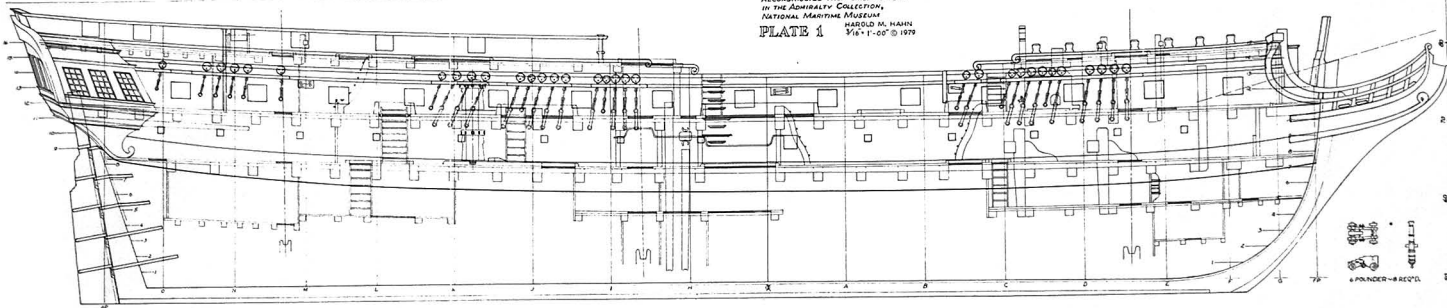
CONFEDERACY
 36 GUN CONTINENTAL FRIGATE
 FRAME DETAILS
PLATE 5

HAROLD A. HARRIS
 1/4" = 1'-00" © 1979

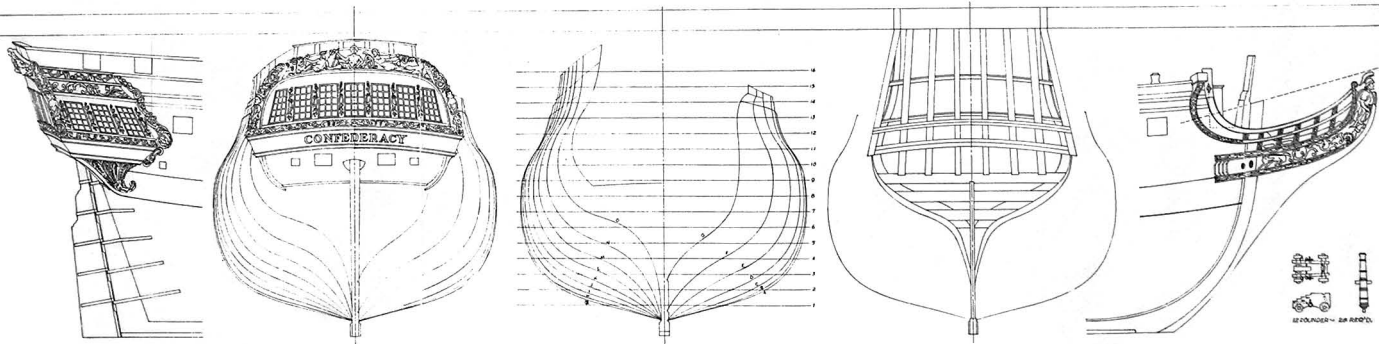




CONFEDERACY
36 GUN CONTINENTAL FRIGATE
RECONSTRUCTED FROM ORIGINAL PLAN
IN THE ADMIRALTY COLLECTION
NATIONAL MARITIME MUSEUM
BASED UPON H. HAIN
PLATE 1 1/8" = 1'-00" © 1979

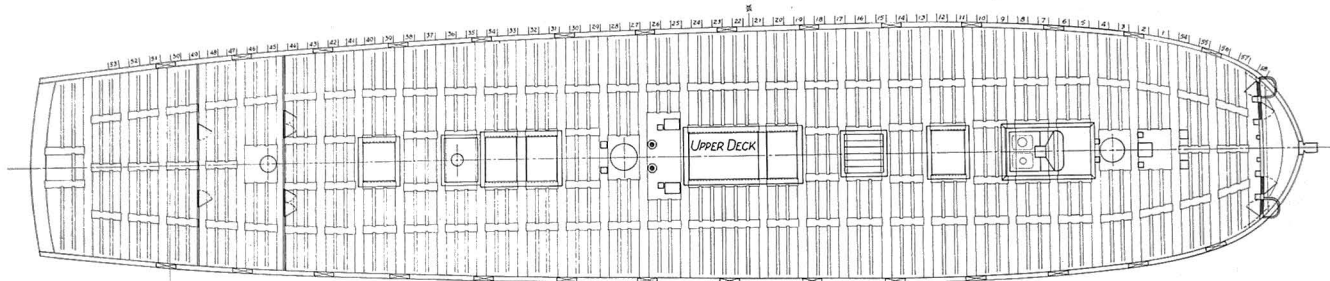


4" = 1' L.S.
4 POUNDERS - REEF

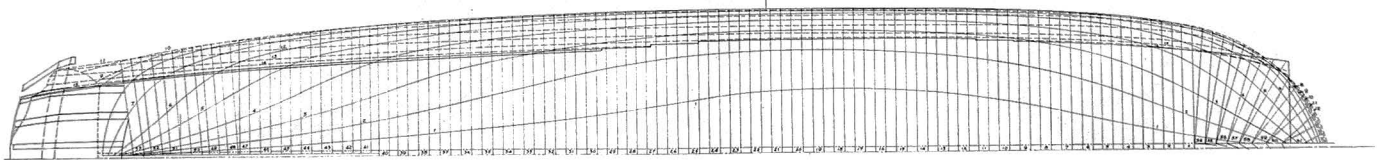
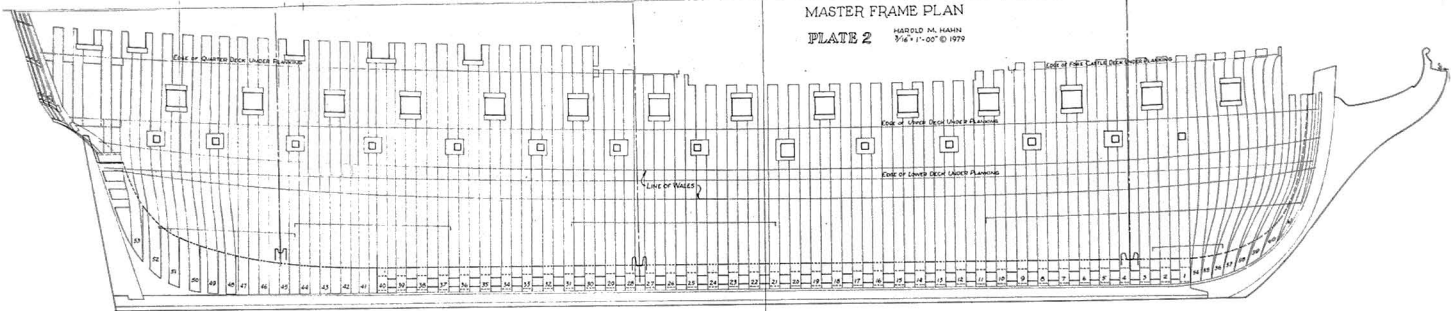


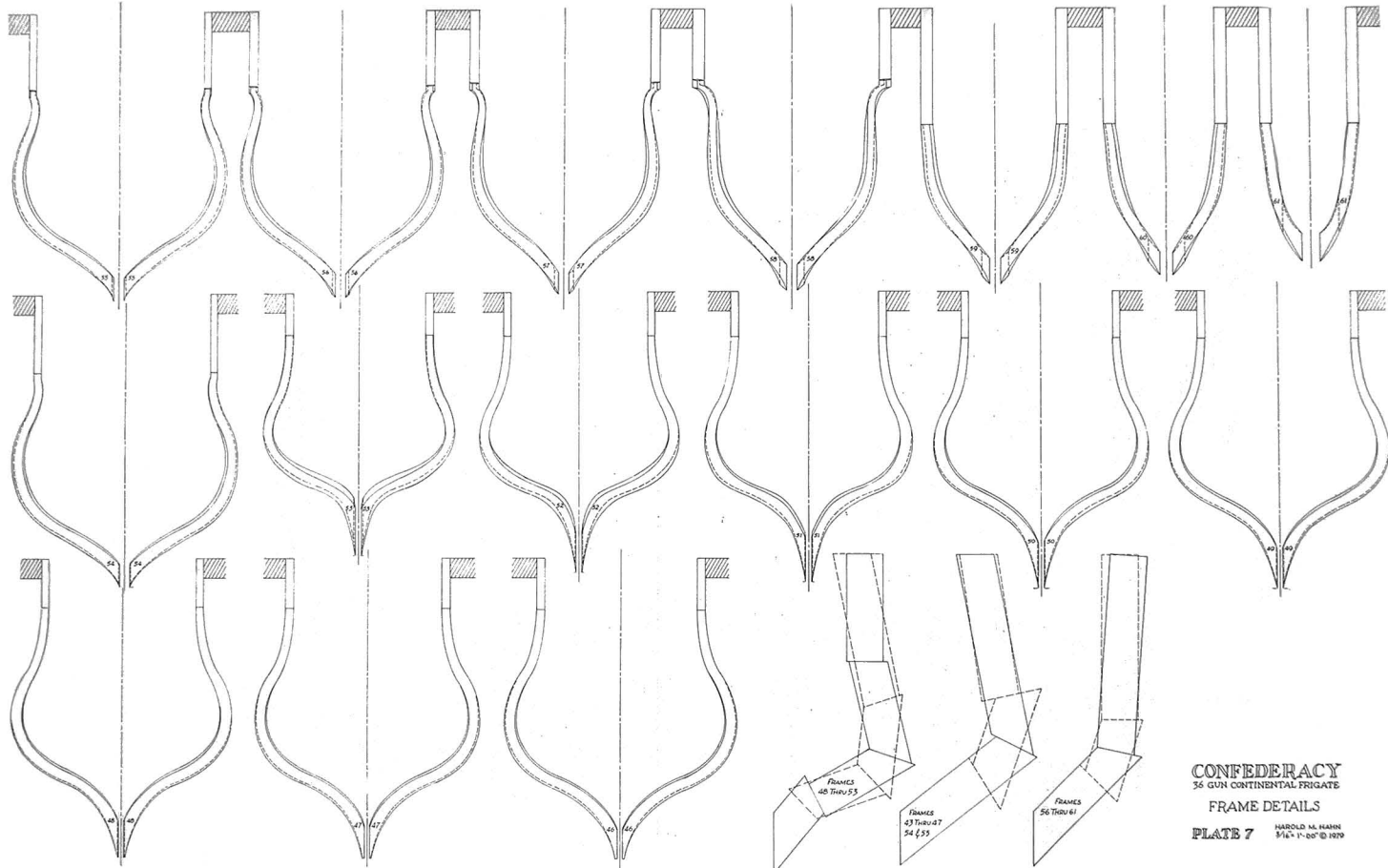
12 POUNDERS - 2A REEF

180 170 160 150 140 130 120 110 100 90 80 70 60 50 40 30 20 10 FEET



CONFEDERACY
 36 GUN CONTINENTAL FRIGATE
 MASTER FRAME PLAN
 HAROLD M. HAHN
 3/16" = 1'-00" © 1979

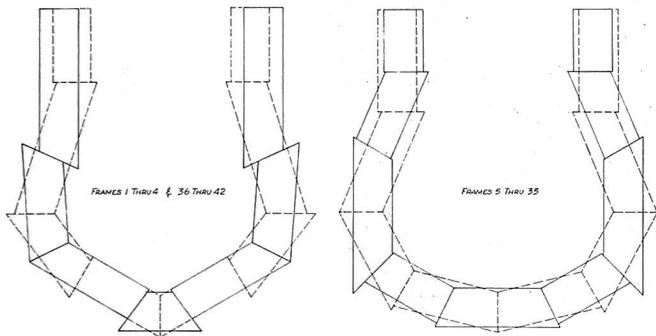
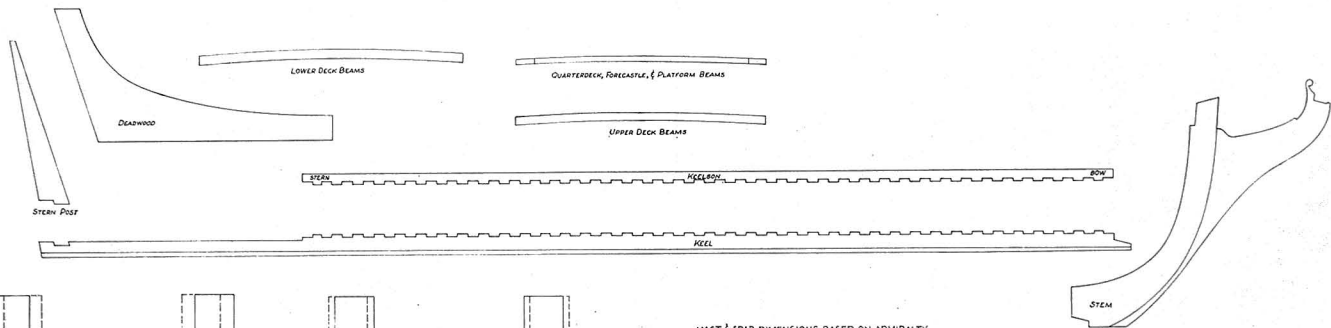
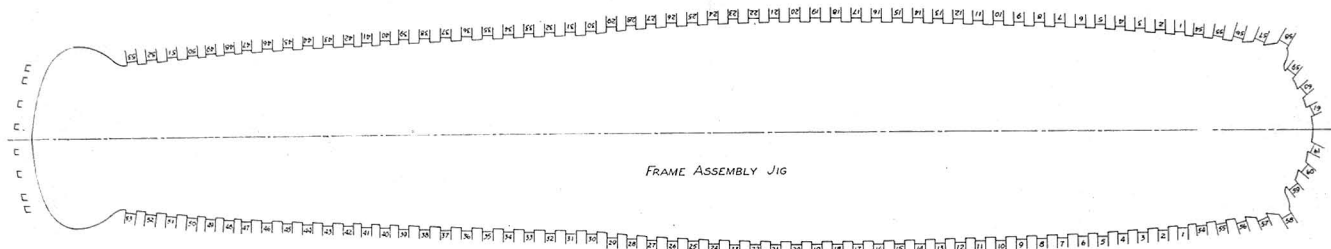




CONFEDERACY
56 GUN CONTINENTAL FRIGATE

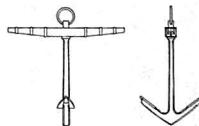
FRAME DETAILS

PLATE 7 HAROLD M. HANN
1/4" = 1'-00" © 1979



MAST & SPAR DIMENSIONS BASED ON ADMIRALTY RECORDS SUPPLEMENTED FROM OTHER SOURCES.

	MASTS		YARDS	
	LENGTH	DIAM.	LENGTH	DIAM.
MAIN MAST (HEAD 13')	97'-0"	27 $\frac{1}{2}$ "	86'-2"	18 $\frac{1}{2}$ "
TOPMAST (HEAD 7 $\frac{1}{2}$)	56'-0"	17 $\frac{1}{2}$ "	58'-0"	12 $\frac{1}{2}$ "
GALL'Y TO STOP	28'-4"	10 $\frac{1}{2}$ "	35'-11"	7 $\frac{1}{2}$ "
= POLEHEAD	17'-0"	7"		
FORE MAST (HEAD 11 $\frac{1}{2}$)	78'-3"	27"	74'-0"	16 $\frac{1}{2}$ "
TOPMAST (HEAD 7')	55'-7"	16 $\frac{1}{2}$ "	52'-0"	11 $\frac{1}{2}$ "
GALL'Y TO STOP	27'-4"	9 $\frac{1}{2}$ "	34'-0"	7"
= POLEHEAD	17'-0"	6 $\frac{1}{2}$ "		
MIZEN MAST (HEAD 9 $\frac{1}{2}$)	76'-2"	20 $\frac{1}{2}$ "	60'-0"	12 $\frac{1}{2}$ "
GAFF			38'-4"	8"
DRIVER BOOM			52'-0"	10"
TOPMAST (HEAD 5 $\frac{1}{2}$)	44'-0"	13"	42'-0"	10"
GALL'Y TO STOP	20'-2"	6 $\frac{1}{2}$ "	33'-10"	6"
= POLEHEAD	11'-10"	4 $\frac{1}{2}$ "		
BONNET	66'-0"	27 $\frac{1}{2}$ "	45'-0"	
FLYING JIB BOOM	40'-5"	12 $\frac{1}{2}$ "	36'-4"	

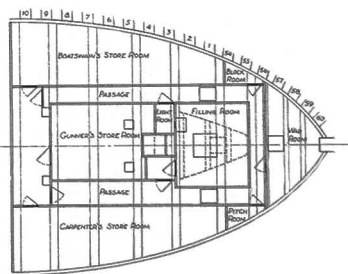
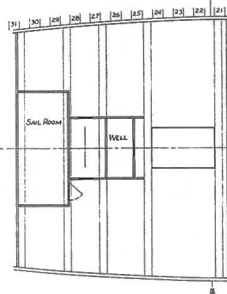
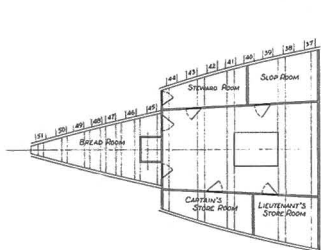
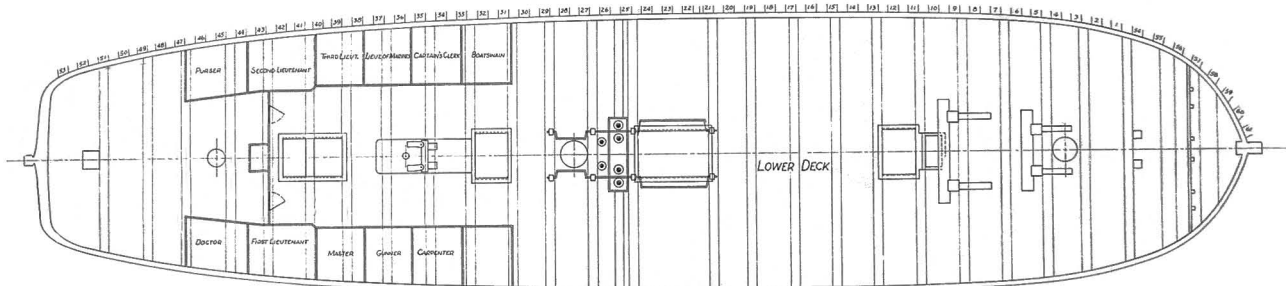
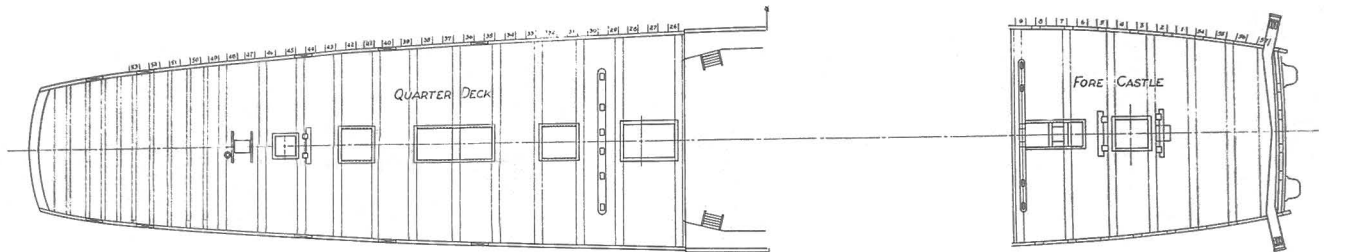


CONFEDERACY
36 GUN CONTINENTAL FRIGATE

PATTERNS

PLATE 8

HAROLD M. HAHN
3/4" x 11"-00" © 1979

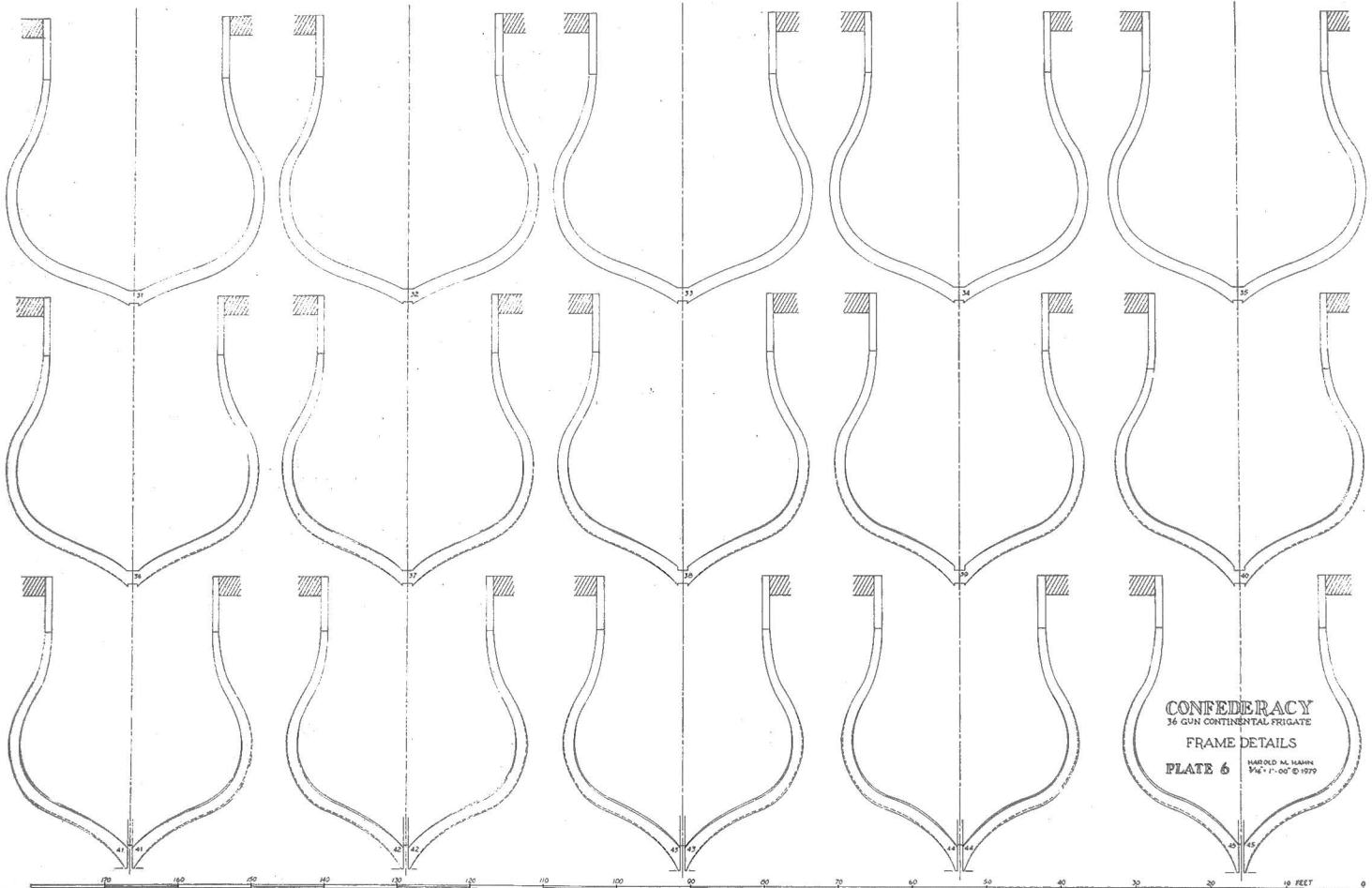


CONFEDERACY
36 GUN CONTINENTAL FRIGATE

DECK PLANS

PLATE 3 HAROLD M. HAIN
3/4" 1'-00" © 1979

RECONSTRUCTED FROM ORIGINAL PLANS
IN THE ADMIRALTY COLLECTION,
NATIONAL MARITIME MUSEUM

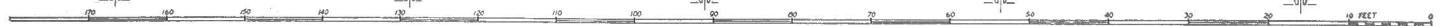


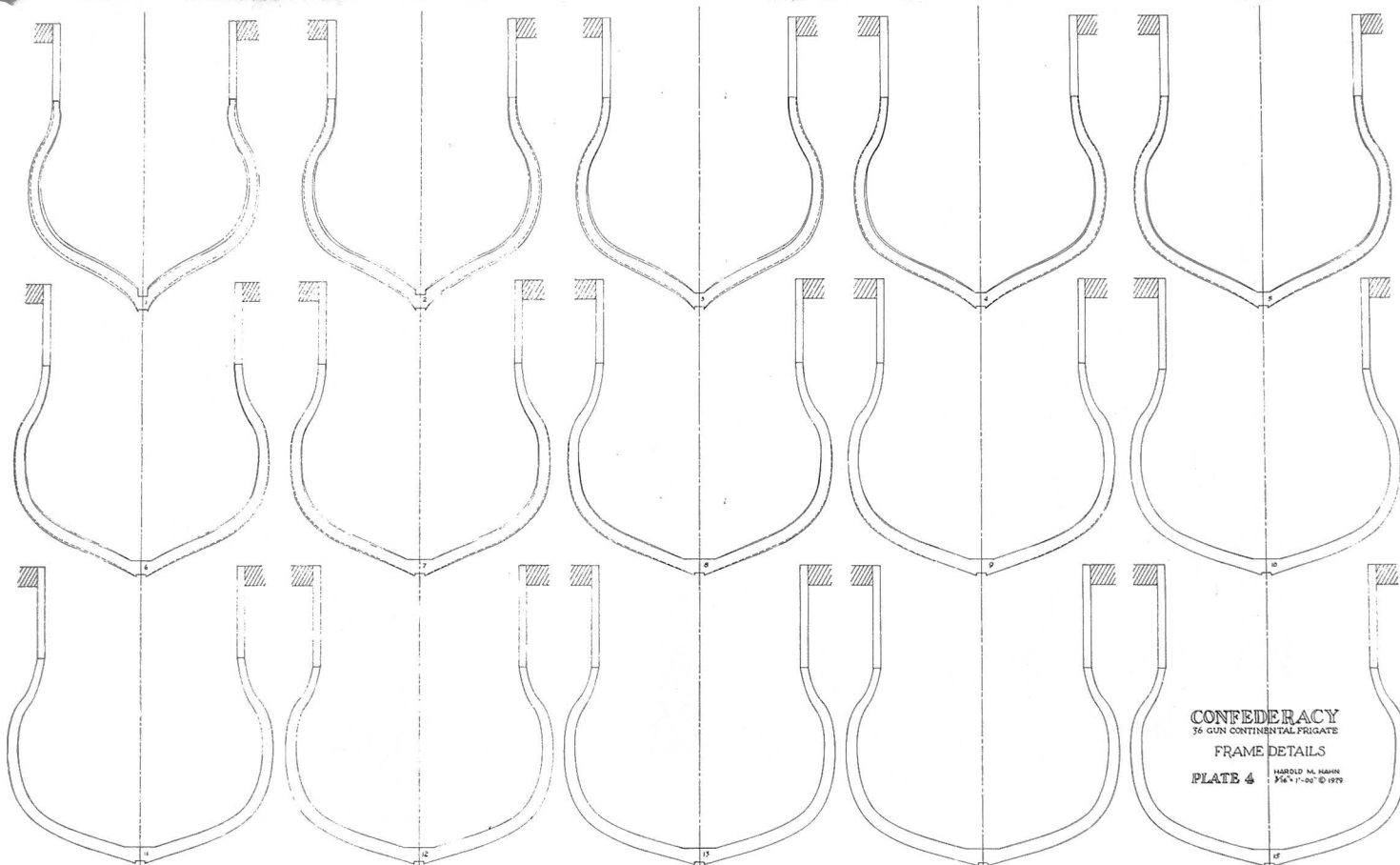
CONFEDERACY
36 GUN CONTINENTAL FRIGATE

FRAME DETAILS

PLATE 6

HAROLD AL. HAHN
MAR. 11, 00 © 1979





CONFEDERACY
 36 GUN CONTINENTAL FRIGATE
 FRAME DETAILS

PLATE 4

HAROLD M. HAHN
 1964-17-00 © 1979

