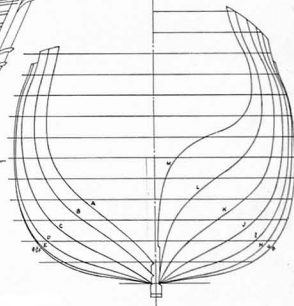
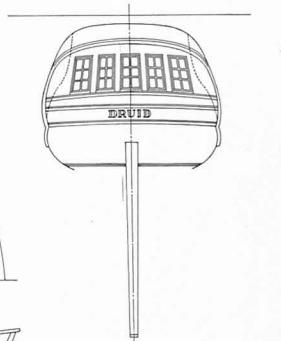
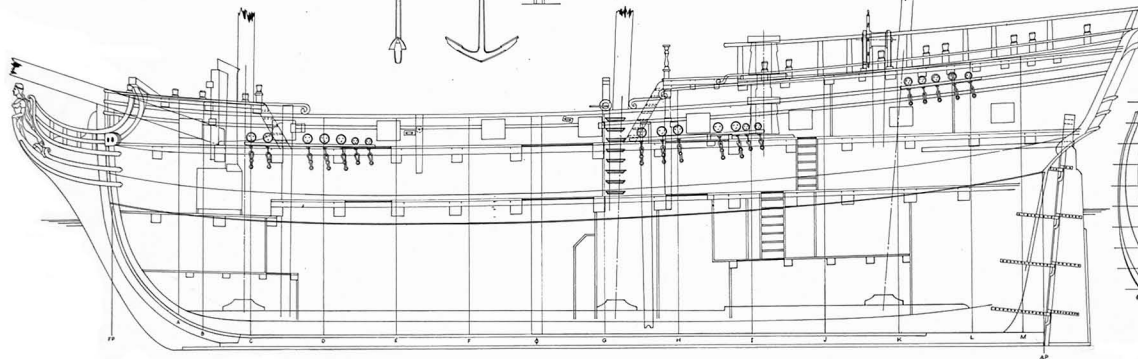
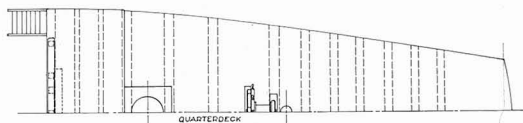
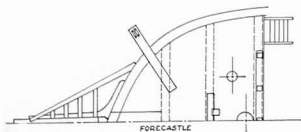
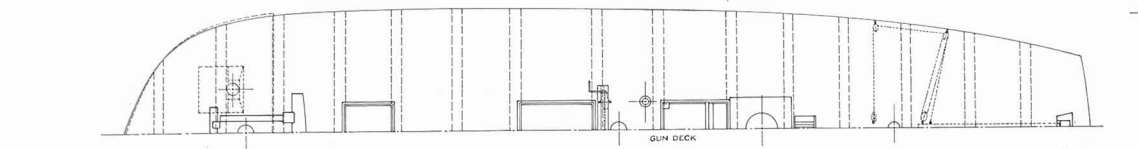


HMS DRUID  
 1776  
 16 GUN SLOOP OF WAR

FRAME DETAILS  
 PLATE 5 HAROLD M. HAHN  
 © 1980

130 120 110 100 90 80 70 60 50 40 30 20 10 FEET

8  
 6  
 4  
 2  
 0  
 2  
 4  
 6  
 8  
 10  
 12  
 14  
 16  
 18  
 20  
 22  
 24  
 26  
 28  
 30  
 32  
 34  
 36  
 38  
 40  
 42  
 44  
 46  
 48  
 50  
 52  
 54  
 56  
 58  
 60  
 62  
 64  
 66  
 68  
 70  
 72  
 74  
 76  
 78  
 80  
 82  
 84  
 86  
 88  
 90  
 92  
 94  
 96  
 98  
 100  
 FEET



HMS DRUID  
1776  
16 GUN SLOOP OF WAR

LINES

PLATE 1 HAROLD M. LAMM  
©1980

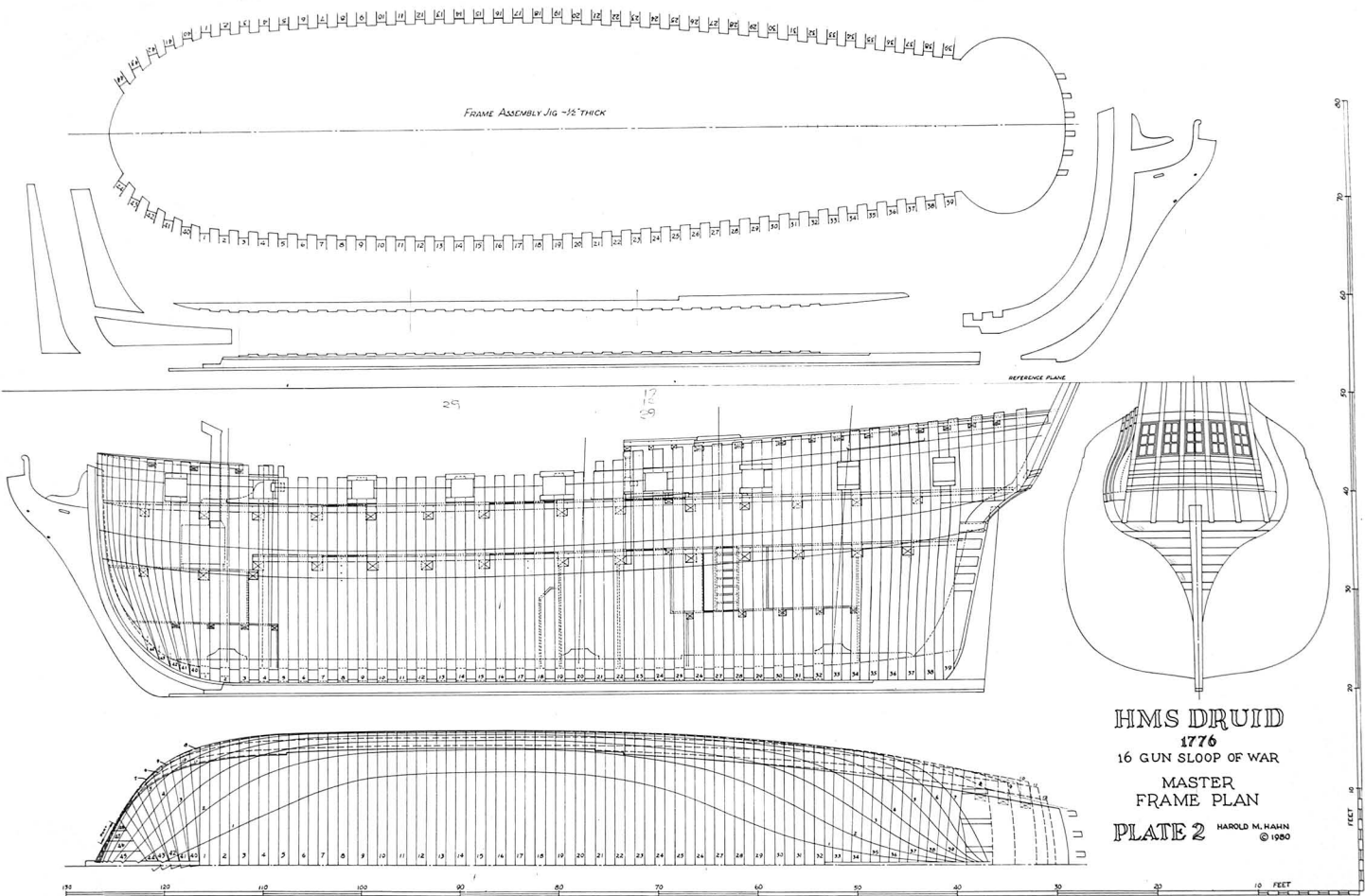
RECONSTRUCTED FROM ORIGINAL PLANS  
IN THE ADMIRALTY COLLECTION  
NATIONAL MARITIME MUSEUM

130 120 110 100 90 80 70 60 50 40 30 20 10 FEET

40  
20  
20  
30  
40  
50  
60  
70  
80  
90  
100  
110  
120  
130  
FEET

FRAME ASSEMBLY JIG - 1/2" THICK

REFERENCE PLANE



HMS DRUID

1776

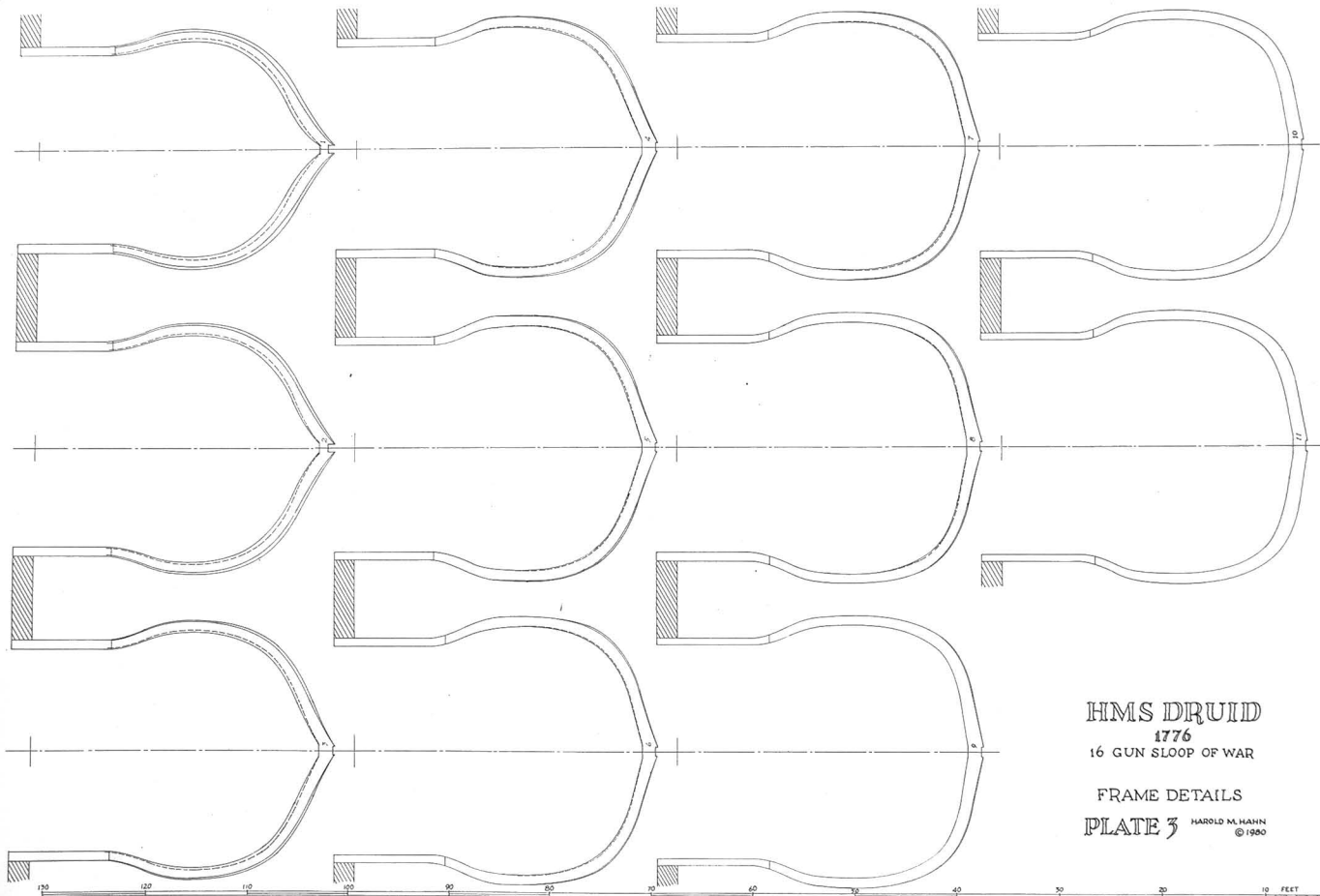
16 GUN SLOOP OF WAR

MASTER  
FRAME PLAN

PLATE 2

HAROLD M. HAHN  
© 1980

20  
10  
0  
10  
20  
30  
40  
50  
60  
70  
80  
90  
100  
110  
120  
130  
FEET



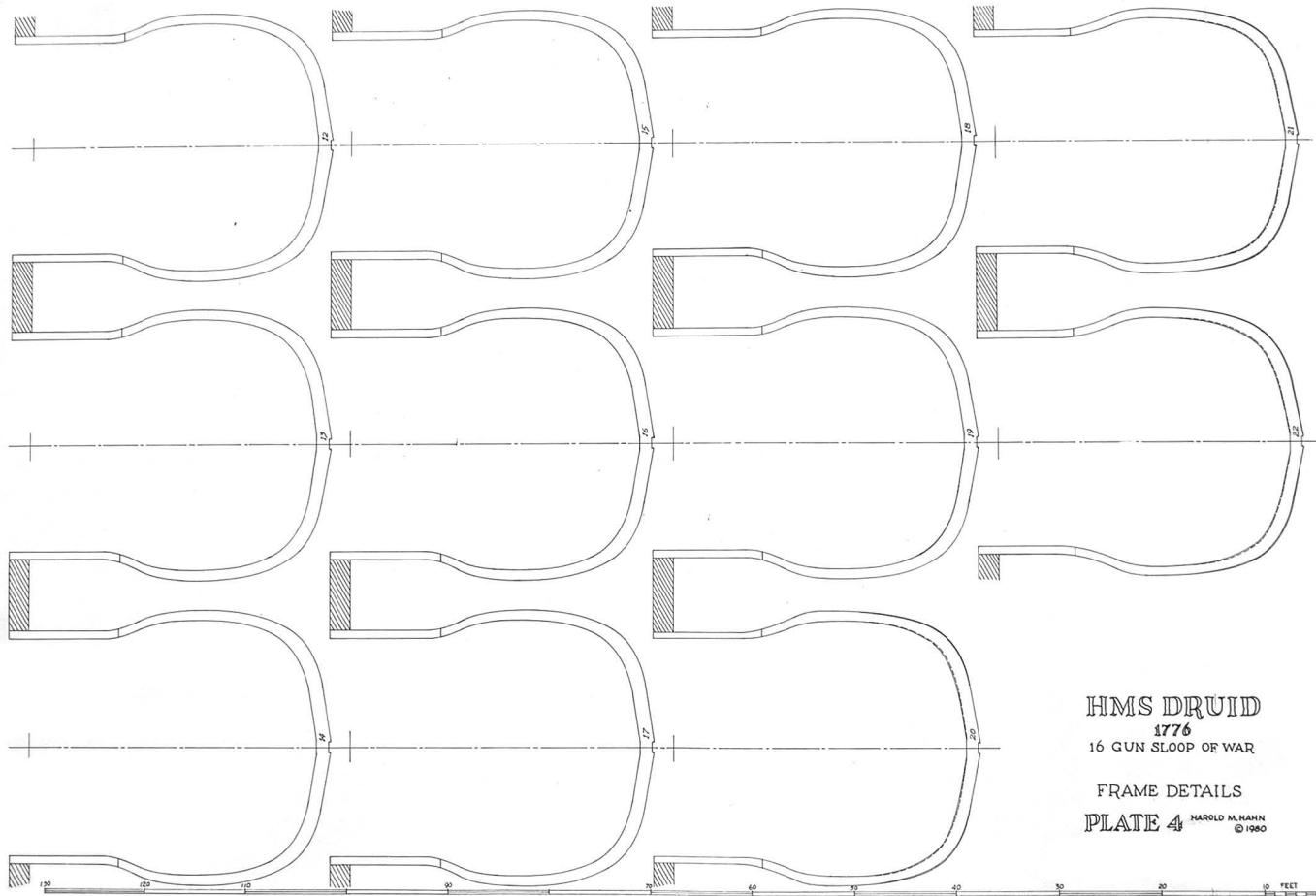
HMS DRUID  
 1776  
 16 GUN SLOOP OF WAR

FRAME DETAILS  
 PLATE 3

HAROLD M. MAHN  
 © 1960

130 120 110 100 90 80 70 60 50 40 30 20 10 FEET

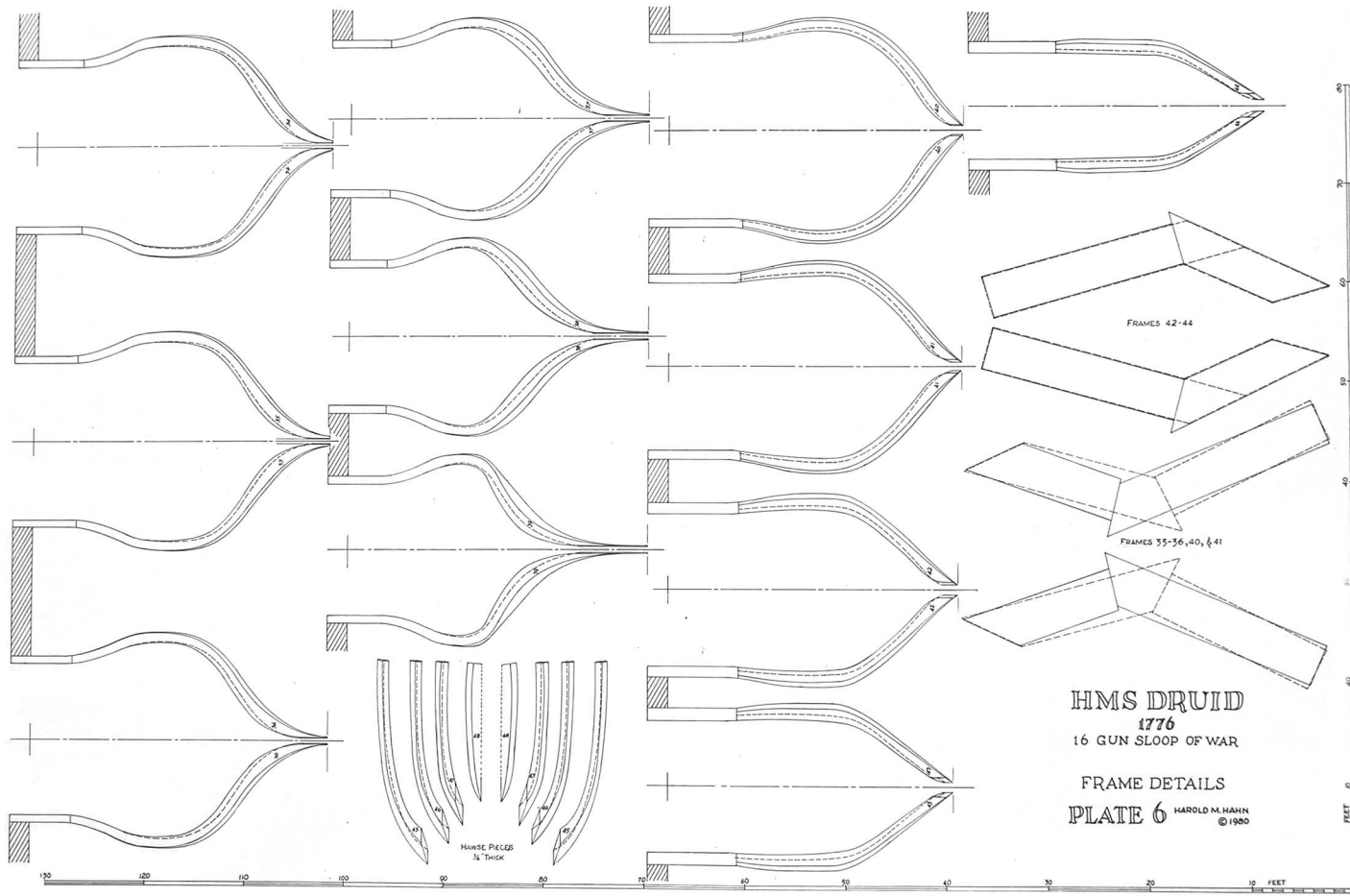
80 70 60 50 40 30 20 10 FEET



HMS DRUID  
1776  
16 GUN SLOOP OF WAR

FRAME DETAILS

PLATE 4 HAROLD M. MAHN  
© 1980



FRAMES 42-44

FRAMES 35-36, 40, & 41

**HMS DRUID**  
**1776**  
 16 GUN SLOOP OF WAR

FRAME DETAILS  
**PLATE 6** HAROLD M. MAHN  
 © 1980

