



RALPH
 32 GUN
 CONTINENTAL FRIGATE
 FRAME DETAILS

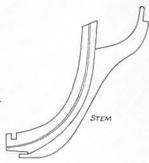
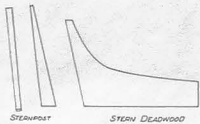
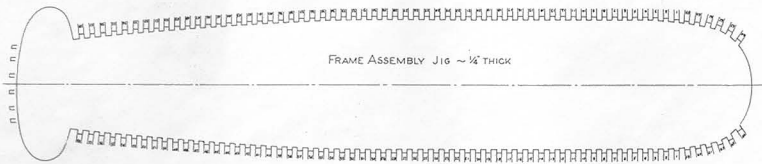
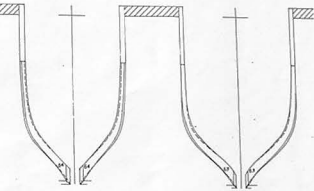
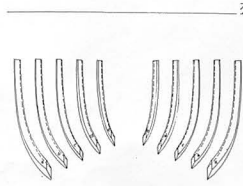
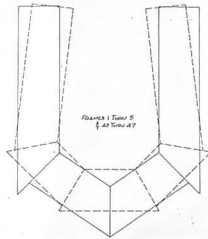
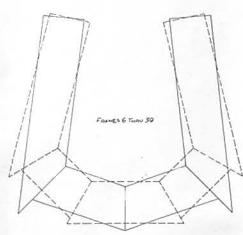
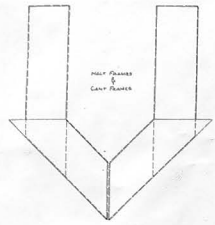
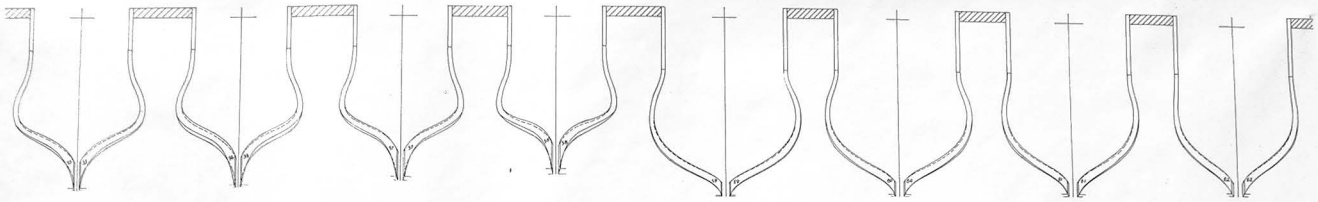
PLATE 3 HAROLD M. HAHN
 18" x 11" - 00" © 1987



RALEIGH
 32 GUN
 CONTINENTAL FRIGATE
 FRAME DETAILS

PLATE 4 HAROLD M. MAHN
 1871-1884 © 1917

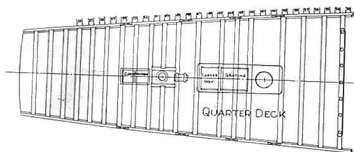
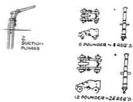
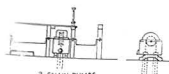
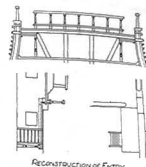
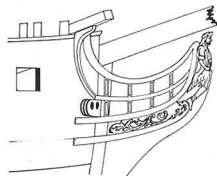
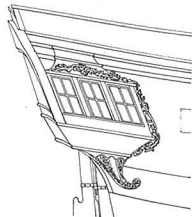
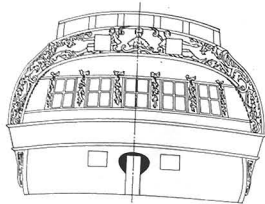




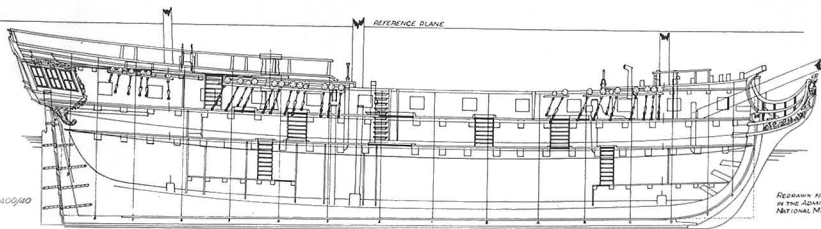
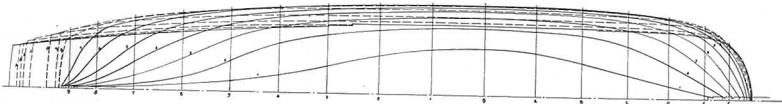
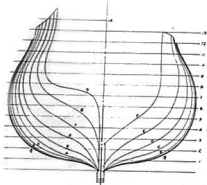
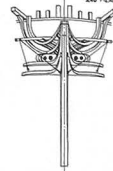
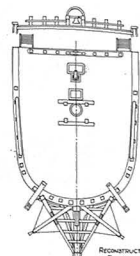
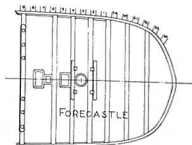
RALEIGH
32 GUN
CONTINENTAL FRIGATE
FRAME DETAILS
& PATTERNS
PLATE 5

HAROLD M. HAHN
18" x 11" x 10" © 1933





ADMIRALTY DRAUGHT 2400A/40



RE-DRAWN FROM ORIGINAL PLANS
BY THE ADMIRALTY COLLECTION
NATIONAL MARITIME MUSEUM

RALEIGH
32-GUN
CONTINENTAL FRIGATE
ADMIRALTY DRAWINGS

PLATE 1 HAROLD M. HOHN
18-11-00 © 1971